

An aerial photograph of Callan Park, showing a dense forest of green trees in the foreground and middle ground. In the background, a city skyline with several tall buildings is visible under a clear sky. The park features a large green field on the left, a body of water at the bottom left, and a paved path or road at the bottom right. The text 'CONSULTATION SUMMARY' is overlaid in the center-left area.

# CONSULTATION SUMMARY

# CONSULTATION SUMMARY

## SUMMARY OF 2018 ENGAGEMENT: RESPONSES

*Public access and active and passive recreation remain of primary importance to park users. The diversity of uses and removal of intrusive buildings have become increasingly important values.*

This plan has been developed by considering the community's priorities for Callan Park. Outcomes of consultations held in 2007, 2011, and 2018, have been analysed, and a consistent evolution of opinion and ideas for the site over time has been observed. The following priorities have emerged as common themes.

### DIVERSITY OF USES

Over the years the community has responded to and supported the diversity of uses across Callan Park. These uses include sports fields, quiet spaces, places for active and passive recreation, areas for dog walking, community and health uses in the NGO precinct. This value is strongly expressed by the community, and aligns with the highly diverse landscape characters that exist across Callan Park.

### SAFE ACCESS AND CIRCULATION

The community agrees that access and circulation in Callan Park should be safe for all people and support movement throughout the park. This can be achieved by removing redundant roads, especially on the waterfront and in the central slopes. Provided there is ample provisioning for carparking and access, the community has expressed its support for removal of intrusive roads.

### CONFLICTS NEED TO BE RESOLVED

The community acknowledges conflicts between the various activities across the park. For instance, there is conflict between users of the Bay Run, cyclists and vehicles at the waterfront as the current roads and pathways are not regulated and needs to be redesigned to improve safety. The park could also be opened up where possible to provide clear designated spaces for various purposes.

### HISTORY AND HERITAGE

Heritage will always be an important part of Callan Park and there is strong community support to maintain and conserve the site. The significant heritage fabric of the site, its rich history, built form and landscape character, are recognised as the underpinning of this plan. The heritage of the park will be retained, and intrusive buildings removed to enhance and reveal heritage sight lines and the valued landscape setting.

### A NEED FOR ACTION

There is an expressed desire to see action at Callan Park, and a commitment from Government to address issues and implement some of the improvements that have been widely supported over the years.



### SESSION 1



### SESSION 2



Summary of the themes raised in consultation responses

# CONSULTATION SUMMARY

## CHANGES OVER TIME

We acknowledge that there are significant differences in the methodologies of the 2007, 2011 and 2018 consultation processes, from letterbox drops, websites, workshops and meetings. The 2018 process sought to engage directly with park users on the site on two separate occasions.

However, despite these differences, we have noted a consistent evolution of opinions and ideas for the site, particularly between the 2011 and 2018 processes. We have found that similar issues have arisen and many of the attitudes from 2011 remain current. There has been a refinement in the prioritisation of tasks, for example, the findings here informed an increase in support for the demolition of intrusive buildings. We believe that patterns in use have evolved and there is now a desire for a greater variety of the key values that define Callan Park as a unique asset in terms of its heritage and as a place of recreation.

In 2011, the priorities of implementation were around public access, active and passive recreation, Callan Point and bush regeneration, and the farm and Glovers Garden. Sustainability, heritage and mental health were also topics listed in the top 10 priorities, alongside health providers, cultural clusters and building demolition.

In 2018, we have seen that public access and active and passive recreation remain of primary importance to park users. However, a diversity of uses has become increasingly important (not noted as a priority in 2011) and building demolition has moved higher up the list of priorities. This may be due to the recognition that there is a need for action on the site, as well as the fact that the buildings have further degraded since 2011. The issue of conflicts and safety between active park users, cyclists, dog walkers etc is an issue that is now a high priority. While mental health has been mentioned, it is no longer a top priority as the community acknowledges that NSW Health has priorities elsewhere for the treatment of mental health in NSW. Ultimately, the top priority is to create an exemplar parkland with a unique character, one that caters to active and passive recreation for everyone to enjoy.

### PRIORITIES FROM 2011

*Based on a list provided*

|                                      |   |                                      |
|--------------------------------------|---|--------------------------------------|
| Active and Passive Recreation        | → | Active and Passive Recreation        |
| Callan Point and Bush Regeneration   | → | Callan Point and Bush Regeneration   |
| Public Access                        | → | Public Access                        |
| Responds to Community Input/Feedback | → | Responds to Community Input/Feedback |
| Mental Health and Community Wellness | → | Mental Health and Community Wellness |
| Callan Park Farm/Glovers Garden      | → | Community Garden                     |
| Mental Health Framework              |   |                                      |
| Sustainability                       |   |                                      |
| Nothing                              |   |                                      |
| Foreshore                            | → | Foreshore                            |
| Heritage Landscape and Buildings     | → | Heritage Landscape and Buildings     |
| Building Demolitions                 | → | Building Demolitions                 |
| Everything                           |   |                                      |

### PRIORITIES IN 2018

### VALUES FROM 2011

*Based on a list provided*

|                                      |   |                                      |
|--------------------------------------|---|--------------------------------------|
| Public Access                        | → | Public Access                        |
| Active and Passive Recreation        | → | Active and Passive Recreation        |
| Callan Point and Bush Regeneration   | → | Callan Point and Bush Regeneration   |
| Callan Park Farm and Glovers Garden  | → | Community Garden                     |
| Sustainability                       |   | Diversity of Uses                    |
| Heritage Landscape and Buildings     | → | Heritage Landscape and Buildings     |
| Mental Health and Community Wellness | → | Mental Health and Community Wellness |
| Existing Health Providers            |   | Reducing Conflicts                   |
| Cultural Cluster                     |   | Maintaining Character                |
| Building Demolition                  | → | Building Demolition                  |
| Veterans Field                       |   | A Commitment by Government           |

### VALUES IN 2018

# CONSULTATION SUMMARY

## EXHIBITION OUTCOMES 2020

The draft LSP was placed on public exhibition for eight weeks between 20 July 2020 and 14 September 2020. Over this period, the Department undertook extensive consultation with key stakeholders, and made available a range of opportunities for people to get involved and comment on the vision, strategies and priorities outlined in the draft plan. Consultation involved visitors to the park and local residents, Aboriginal stakeholders, neighbouring local Councils, Government agencies, non-government organisations, sporting groups, adjacent landowners and park tenants.

Despite the Covid-19 pandemic limiting the opportunities to provide conventional face-to-face engagements, a comprehensive consultation strategy was implemented offering a variety of options for community and stakeholders to be consulted on the plan. This included an interactive Social Pinpoint website for people to share comments on an ideas wall and park map, and an online survey inviting participants to rank their satisfaction with the vision, strategies and the key priorities for implementation. A public Q and A webinar was held on 10 August 2020 with presentations from the consultant team. Several virtual presentations and Q and A sessions were made to key stakeholder groups. Four park drop-in sessions (pop-ups) were offered over four weekends at key locations on the Bay Run Waterfront Drive, and at Gate A, the main entry to Callan Park, and a fifth pop-up was held at Rozelle.

Key stakeholders, including Jamie Parker MP member for Balmain, Inner West Council, and the Friends of Callan Park, also engaged directly with the community and their members, providing additional opportunities for people to have a say.

This phase of consultation has provided a significant and important source of feedback. All submissions, comments and ideas provided through the Planning Portal, mailboxes, and Social Pinpoint have been considered and an implementation plan has been developed based on this feedback. Ideas raised addressing matters outside the scope of the LSP will be considered and prioritised by the Department for future work.

The submissions overwhelmingly endorse the vision and strategies put forward in the plan and fresh ideas on the broad concepts have been proposed. There is strong support for the strategy of unlocking Callan Park's potential to function as a large urban parkland that compares to other large urban parks across Sydney, and equally strong support for a functional network of pathways, and removing, or partially removing buildings and redundant roads to open up more green space, views and vistas.

Based on the community feedback, a prioritised implementation plan has been established:

- Prioritise the waterfront - create new waterfront open green space by demolishing intrusive buildings on the waterfront, extend pedestrian access via a pathway from Wharf Road to the waterfront, provide new park facilities including new accessible amenities
- Provide new carpark at Wharf Road with safe and accessible pedestrian access to the waterfront and sporting grounds, provide disabled parking and a 'kiss and ride' drop off area at Waterfront sports ground
- Close Waterfront Drive to vehicular traffic and upgrade the Bay Run, providing separate pedestrian and cycling paths
- Improve protection for the Aboriginal cultural heritage and bushland at Callan Point
- Commence the restoration of Building 497 for a community and sports use
- Restore heritage buildings for community reuse including Gary Owen Summerhouse and Bonnyview (the Chaplain's cottage) in a way that is complementary to the park setting
- Repair the seawall, and provide estuarine habitat opportunities as part of the design
- Remove intrusive buildings 499 and 511 at Waterfront Green and Waterfront Sports
- Adaptive reuse of the Cane Room B512 for a community use complementary to the park setting
- Demolish intrusive buildings on Callan Point and restore the natural landscape

- Restore and reinstate the original heritage and wrought iron sandstone gates at the main entry to Callan Park
- Provide a playground at Waterfront Sports Ground and explore feasibility of adaptive reuse of B496 as part of the playground
- New open green space in Central Green and an accessible path network, remove buildings 201, 207, 209, 210 and service roads. Explore the feasibility of adaptive reuse of 208.
- Connect the Central Green to Balmain road by a visually non-intrusive low impact pathway that is respectful of heritage and topography
- Reuse the pool as a water harvesting or water treatment reservoir and amphitheatre
- Amphitheatre and shelter around the bowling green
- Demolish intrusive buildings around Balmain Road sporting ground, upgrade oval and provide a sports pavilion
- Expansion of community/ cultural facilities complementary to Writing NSW
- Restore the Convalescent cottages with select views to Iron Cove, demolish 488
- Potential harbour swim site

Beyond these priorities, several common themes emerged including:

- Ensure that the views of Aboriginal people are included
- Approach the design of park improvements with a 'light touch' - let the park's special attributes shine and resist the urge to over design
- Ensure the community is represented in decision making for Callan Park
- The park is used by dog owners and commercial dog walking businesses who value the size of the park and areas free of vehicles for dog exercise and socialisation but identify a lack of off-leash areas, and absence of a Companion Animals Management Plan
- Callan Park can play a greater role in biodiversity and ecological enhancement for the benefit of native flora and fauna. The continued presence of Bushcare is important

- Pathways throughout the site should be sensitively sited to respect topography and heritage
- Explore opportunities for enabling appropriate buildings across the site including buildings at Callan Point to be used for community uses, for cultural and artistic purposes, for mental health, for cafes and other low key commercial uses.
- Ensure the park is safe by day, and safe at night as part of the transformation to parkland
- Provide accessible access paths that prioritises the safety of pedestrians
- Provide additional amenities and public toilets

In response to these themes, the Department has commenced, or will commence the following projects:

- Companion Animals Management Plan
- Callan Point heritage and ecological management plan
- Continuation of Bushcare
- Tree Management Plan and Urban Forest Framework
- Comprehensive building condition audit, maintenance plans and structural assessment of buildings
- Sea wall design and documentation
- Pipeline of conservation works to Gary Owen Summerhouse, B497, B205
- Pedestrian Entry and Wayfinding Signage
- Safety, Access, Inclusion Plan
- Heritage Conservation Management Plan Review
- Bay Run Lighting Upgrade

An aerial photograph of the Callan Park campus. The foreground shows several large, modern buildings with flat roofs and a parking lot. A large, light-colored building with a gabled roof is prominent in the center. To the right, there is a cluster of older, multi-story brick buildings with gabled roofs and a prominent tower. The campus is surrounded by lush green trees and lawns. In the background, a large body of water (likely a lake or bay) is visible, with a bridge crossing it. The city of Sydney is visible in the distance under a clear sky.

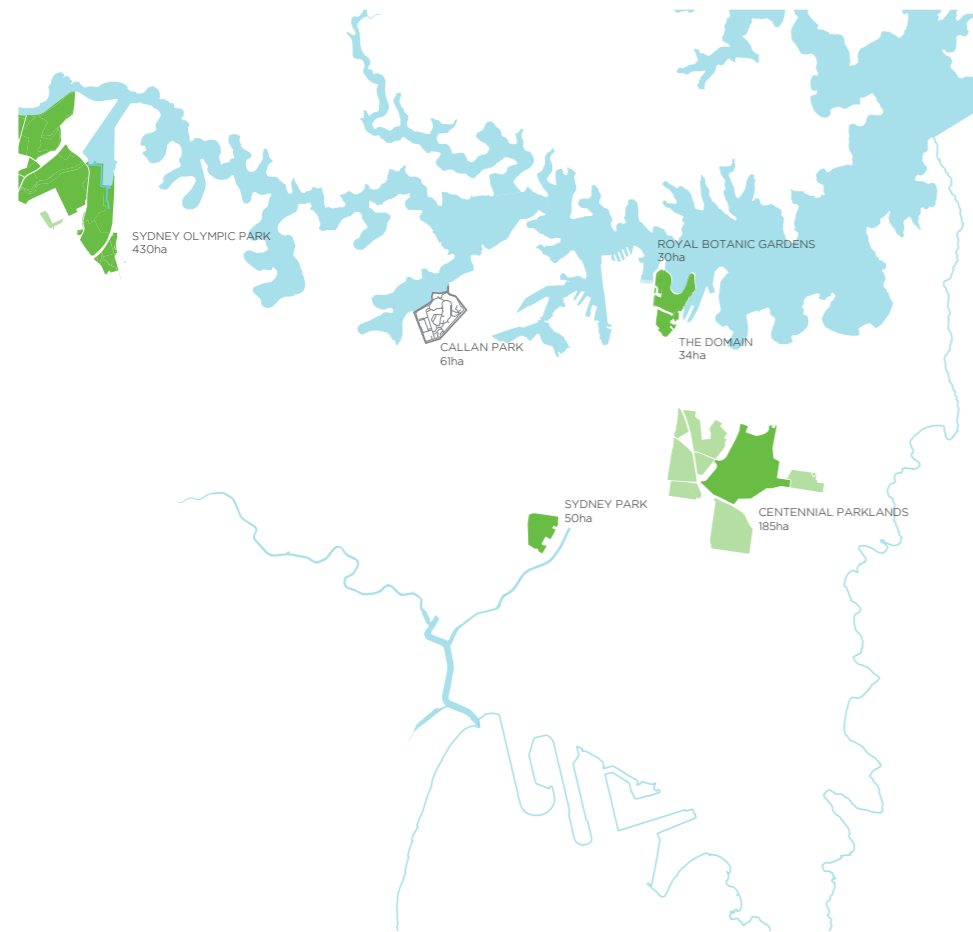
# CALLAN PARK VISION AND STRATEGY

# CALLAN PARK VISION AND STRATEGY

## DELIVERING GOVERNMENT PRIORITIES

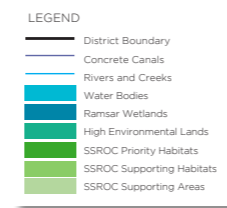
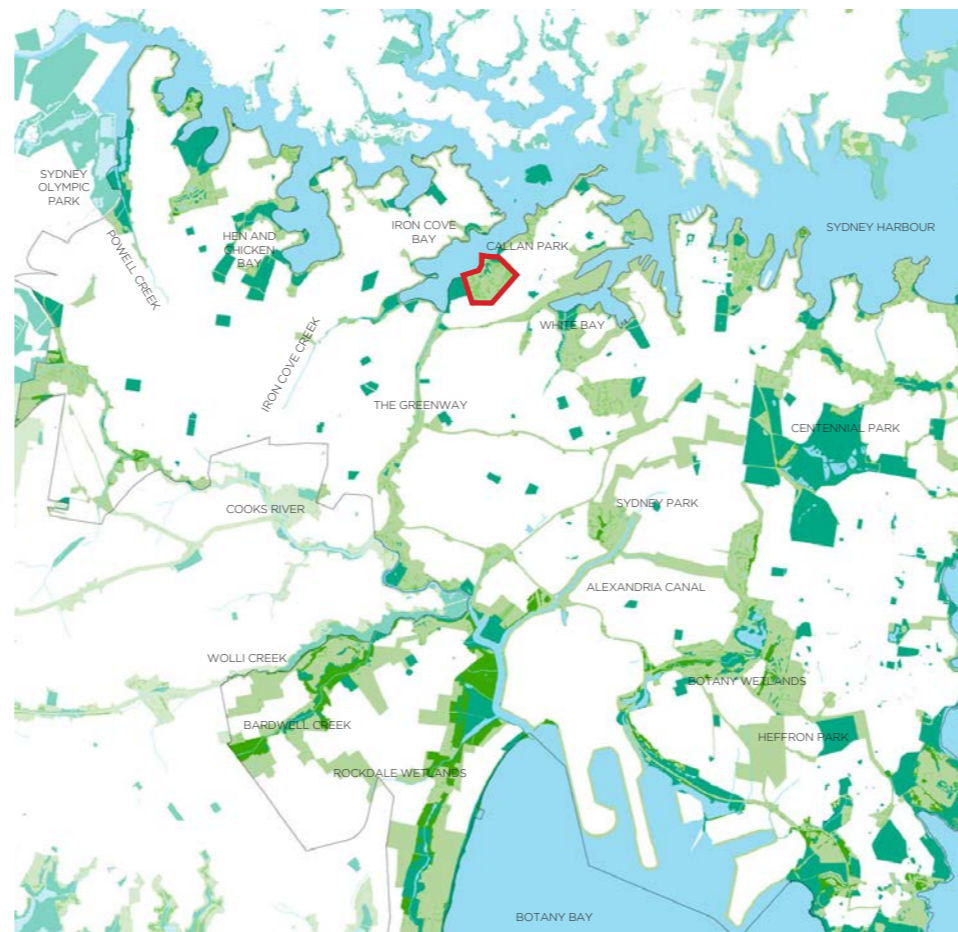
### 1. GREENER PUBLIC SPACES

Callan Park can become a large urban parkland comparable to other iconic parks across Sydney, such as Parramatta Park, Olympic Park, Sydney Park, Centennial Park or the Royal Botanic Gardens.



### 2. DELIVERING THE SYDNEY GREEN GRID AND INCREASING URBAN TREE CANOPY

Callan Park plays an important role in the Sydney Green Grid. Callan Park sits at the intersection of a number of priority Green Grid corridors, with significant urban tree canopy, patches of rare remnant bushland and bushcare sites as well as a wide diversity of tree species.



### 3. REVEAL AND CELEBRATE ABORIGINAL HERITAGE AND CULTURE

Callan Park provides an opportunity to reveal and communicate Aboriginal cultural values of the area. Middens, rock carvings, remnant vegetation, rocky headlands and historic creek lines are all aspects of ongoing indigenous use that should be celebrated within the parkland,



Historical Images:  
Mitchell Library,  
State Library of NSW

# CALLAN PARK VISION AND STRATEGY

## DELIVERING COMMUNITY PRIORITIES

Outcomes of community consultations about Callan Park held in 2007, 2011, 2018, and 2020 were analysed and the following common priorities emerged as common themes:



Photos: OEH

Photos: Robyn Kennedy

### 1. SHARING OUR DIVERSE SPACES

The use of the site for a variety of purposes including sports fields, quiet spaces, places for active and passive recreation, areas for dog walking, community and health uses in the NGO precinct should continue. Effort should be made to resolve any conflict between activities so access is safe and equitable.

### 2. ENSURING SAFE ACCESS AND MOVEMENT

Callan Park both day and night should be safe for all people and support easy pedestrian and cycle movement throughout the park.

### 3. PRESERVING OUR HISTORY AND HERITAGE

Maintain and conserve the significant landscape, social and cultural heritage of the site, from the shell middens and rock shelters used by First Nations People, to the historic sandstone buildings and therapeutic landscape gardens of the former hospital.

# VISION

***Callan Park will be an iconic urban park.  
A park with a mosaic of gardens,  
landscapes and recreation opportunities  
for Sydneysiders to explore. It will  
celebrate and treasure its unique heritage  
and position on the waterfront.***



*A two-part strategy is proposed to transition Callan Park into a large urban parkland that enhances the unique landscape, architecture and history of the site.*



**UNLOCK CALLAN PARK'S POTENTIAL TO FUNCTION AS A LARGE URBAN PARKLAND THAT COMPARES TO OTHER ICONIC PARKS ACROSS SYDNEY.**

To unlock this potential the strategy has two moves that are described on the following page. They are focussed on creating more green space and a network of pathways that guide people through Callan Park.



**CELEBRATE AND ENHANCE CALLAN PARK'S DIVERSE CHARACTER AREAS**

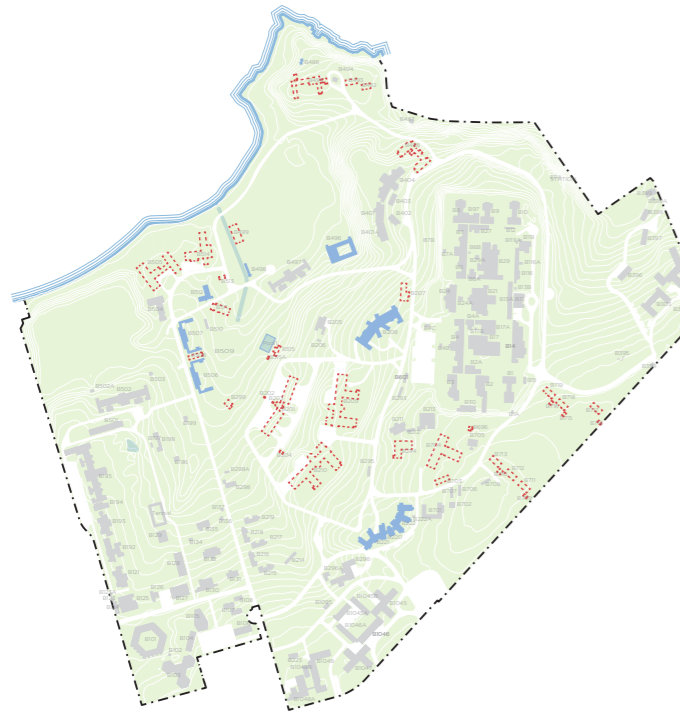
There are eleven landscape character areas that together create an intricate network of spaces across Callan Park. Each area has special values that will be enhanced and protected.

To achieve this, each character area and their heritage has been analysed. Different functions and uses that suit each character area have been identified.

# CALLAN PARK VISION AND STRATEGY

## UNLOCKING CALLAN PARK'S POTENTIAL AS A LARGE URBAN PARKLAND

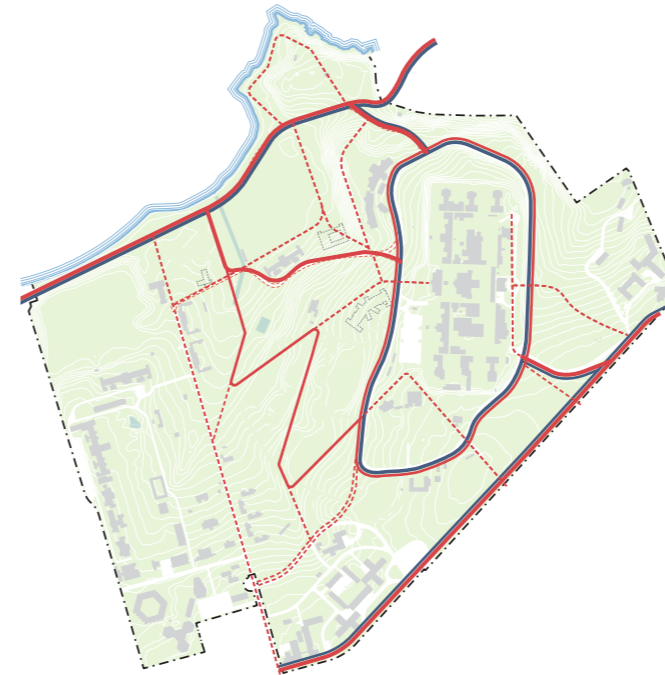
The following key moves will unite the park and make it feel safe and connected:



### 1. CREATE MORE GREEN SPACE OPENING UP TO THE WATERFRONT

This move will increase the amount of green space in the park, increase the opportunities for a wider range of recreational uses, open up views to the waterfront and connect park users to their heritage.

This move will be achieved by opening up sight lines to significant vistas within the park, and increasing visual connection to the waterfront. In some instances this involves investigating the removal, or part removal, of unsympathetic buildings in the park.



### 2. CREATE A NETWORK OF PATHWAYS

This move will implement a purpose-built network of pathways that prioritise pedestrians and cyclists to create journeys through the park allowing discovery of its unique heritage and diversity. The path network will frame views and sightlines to open space, the waterfront and heritage features.

This will ensure safe and equitable use of the park for everyone. This move will require the removal of some existing vehicular roads and the creation of some new shared paths.



# CALLAN PARK VISION AND STRATEGY

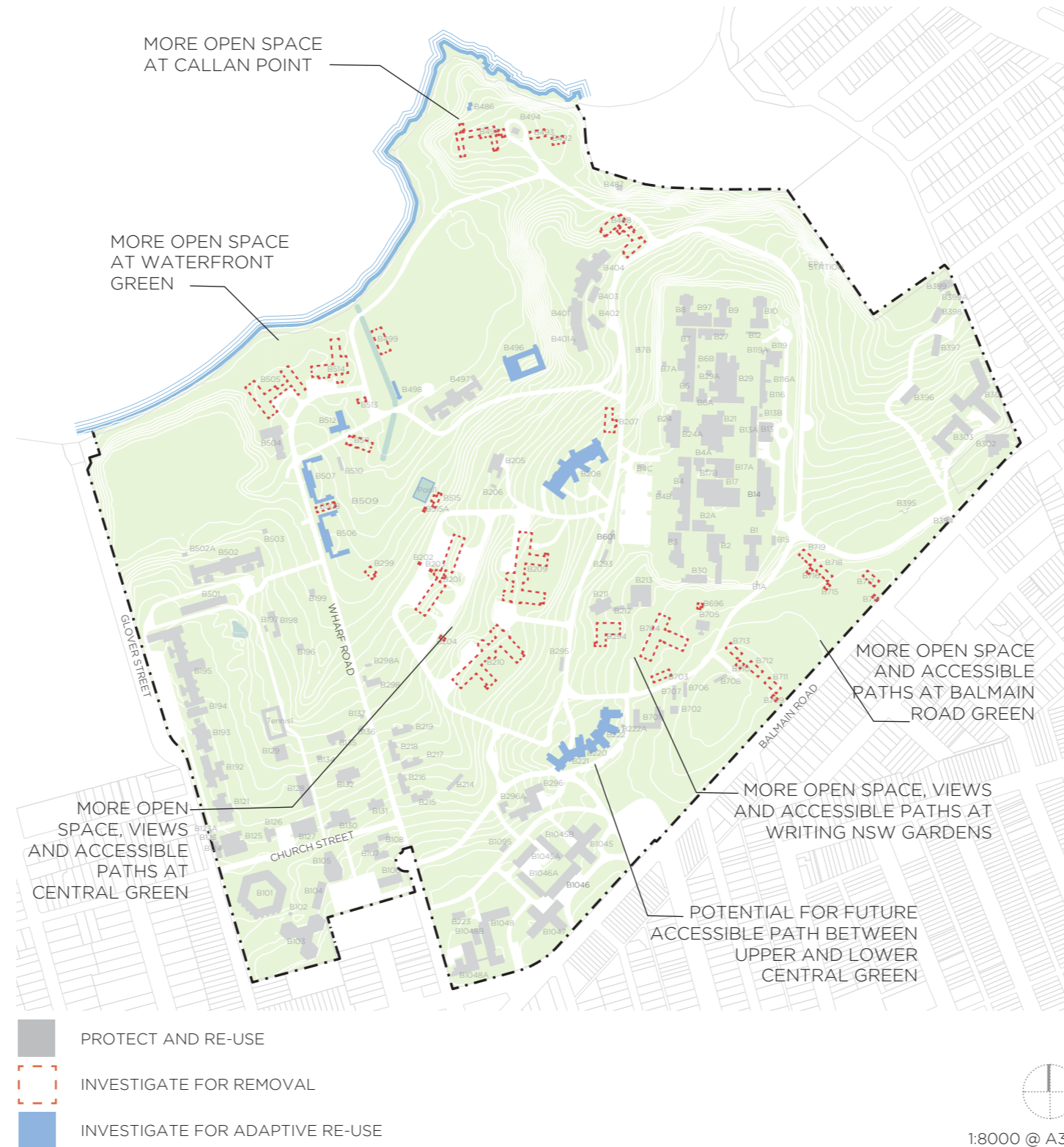
## UNLOCKING CALLAN PARK'S POTENTIAL AS A LARGE URBAN PARKLAND

### 1. CREATE MORE GREEN SPACE AND OPEN UP TO THE WATERFRONT

This move will increase the amount of green space in the park, increase the opportunities for a wider range of recreational uses, open up views to the waterfront and help to better connect park users to their heritage.

This move will be achieved by opening up sight lines to significant vistas within the park, and to increase the visual connection to the waterfront. In some instances this involves investigating the removal, or part removal, of unsympathetic buildings in the park.

The LSP proposes a series of moves to open up sight lines to significant vistas within the park, and to increase the visual connection to the waterfront. In some instances this involves the removal, or part removal, of around twenty-four unsympathetic buildings and ten ancillary structures throughout the park, as well as ten buildings identified for adaptive reuse. At this stage, the potential to adaptively reuse these buildings has not been confirmed through detailed investigation. Further assessment of the activation outcomes, economic benefit and functional adaptive reuse potential of these buildings will be undertaken as a next step in the detailed design work for Callan Park.



# CALLAN PARK VISION AND STRATEGY

## UNLOCKING CALLAN PARK'S POTENTIAL AS A LARGE URBAN PARKLAND

### 2. CREATE A NETWORK OF PATHWAYS

This move will implement a purpose-built network of pathways that prioritise pedestrians and cyclists to create journeys through the park allowing discovery of its unique heritage and diversity. The path network will frame views and sightlines to open space, the waterfront and heritage features.

This will ensure safe and equitable use of the park for everyone. This move will require the removal of some existing vehicular roads and the creation of some new shared paths.



# CALLAN PARK VISION AND STRATEGY

## UNLOCKING CALLAN PARK'S POTENTIAL AS A LARGE URBAN PARKLAND

### SUGGESTED NEW VEHICLE ACCESS

Removal of vehicular access to the waterfront and the central slope will transform Callan Park into an open space parkland that minimises car movement and potential areas of conflict. The proposed Wharf Road car park and Kirkbride car park provide excellent access to both the waterfront and the Central Slope. The proposed Wharf Road car park will be designed to be low impact, being sympathetic to the heritage landscape.

This new vehicular system will improve pedestrian and cyclist safety especially along the waterfront Bay Run.

A total of 230 car spaces across the two car parks will meet the requirements for a parkland of this scale based on precedent studies prepared by the traffic engineering consultants. Overflow parking is suggested along the shoulder of Wharf Road.

The proposed Wharf Road car park will service the Glover Street Sports Fields and Waterfront Drive sporting grounds and provide universal access parking. The small existing carpark to the south of Waterfront Drive sporting ground will provide universal access parking and a 'kiss-and-ride' drop off zone. A small managed loading zone will be investigated behind building 497.

The road between Wharf Road and Military Drive is proposed to remain open as a low speed vehicle link. Managed vehicle access to service Buildings 205 and 494 is to be retained.

